

2014 National and State Fire Preparedness Program Summaries

Bureau of Land Management
Fire and Aviation





Table of Contents

BLM Fire Preparedness Program Summary for 2014	4
National Office Budget and Staffing	5
Alaska Fire Service.....	7
Arizona	9
California	11
Colorado.....	13
Eastern States.....	14
Great Basin NIFC Assets	15
Idaho	17
Montana / Dakotas.....	19
Nevada.....	21
New Mexico - Oklahoma - West Texas.....	23
Oregon - Washington	25
Utah.....	27
Wyoming	29

<http://www.blm.gov/nifc/st/en/prog/fire.html>

BLM Fire Preparedness Program Summary for 2014

As fire seasons have tended to become longer and fire behavior more severe, questions inevitably arise among the public and media. “Is this the worst fire season ever?” “How does this year compare with other bad fire seasons?”

While a number of metrics can be used in measuring and comparing “worst” fire seasons, perhaps the most important and poignant is the number of firefighters who did not make it home to their families. Last year, unfortunately, will be remembered for the 34 firefighters who responded to the call and never returned; 19 of whom were members of the same crew. One BLM smokejumper and two contractors working fires on BLM lands were among the 34.

If we carry anything from last year into the 2014 fire season, it must be a renewed focus on safety; on the notion that no tree, no acre, no structure or livestock is worth the loss of a firefighter’s life; and that we all bear the responsibility for safe practices.

In spite of the tragedies of 2013, there were some positives and some successes.

- Best management practices regarding the effective protection of critical sage-grouse habitat were employed and helped to significantly reduce the acres of habitat burned from 2012 to 2013.
- Thirteen additional Single Engine Air Tankers were added to the fleet of 11 last year providing 24 total SEATs. That number will increase to 33 SEATs on exclusive-use contracts for the 2014 season. These aircraft are a valuable asset in all BLM states and they have a particularly helpful role in quick response in minimizing the spread of fires in sage-grouse habitat areas.
- Crews of veterans in several states contributed to the BLM fire program’s effectiveness in fuels projects and suppression efforts. Many of these veterans have moved on to full-time jobs in resource management; and many will return to gain additional experience on the fireline and in fuels management.
- Rural Fire Protection Associations became established in some areas and were trained by BLM fire specialists.
- There were hundreds, even thousands, of fires successfully fought; most contained in initial attack; and thousands of firefighters returned home safely.

As we move into the Western fire season, we certainly will continue to face ongoing challenges related to budgets, resource availability, drought and fire, and more. But reading through the pages of this publication and absorbing the nuts and bolts of each state’s fire program, including the lofty goals and emphasis areas, there is little doubt we are up to the challenges. Just as on the fireline, it may not be easy, but I’m confident we have the people and the ability to accomplish what needs done. Let’s be sure we do so safely, so everyone returns home at the end of the year.

/s/ Howard Hedrick
Acting Assistant Director, Fire and Aviation

BLM Resource and Budget Summary



Fire and Aviation Management Organization

Year	Number of Preparedness and Fuels Positions	Engines	IHCs	Smokejumpers	Aircraft Fixed Wing	Aircraft Rotor Wing
2014	3,222	284	11	136	39	24
2013	3,228	284	11	136	40	24
2012	3,347	289	11	147	40	24
2011	3,369	282	11	142	45	23
2010	3,468	285	11	151	46	24
2009	3,431	296	11	155	23	24
2008	3,418	284	11	159	23	24
2007	3,403	299	12	146	40	25

Approximate Budget or Expense in Thousands - Nationwide

Year	LF100 Preparedness Base Allocation	LF200 Suppression & ES Expenditures	LF210 Severity Expenditures	L5320 Fire Trespass Allocation	LF571/LF561 State Assistance Allocation
2014	\$146,892	\$0	\$0	\$3,374	\$22,011
2013	\$146,892	\$264,368	\$10,155	\$11,112	\$18,521
2012	\$143,447	\$288,146	\$7,889	\$15,445	\$16,190
2011	\$144,727	\$187,053	\$6,905	\$4,597	\$17,236
2010	\$150,273	\$159,152	\$5,518	\$4,647	\$16,394
2009	\$145,662	\$133,543	\$3,700	\$1,849	\$24,629
2008	\$142,446	\$192,070	\$7,801	\$6,547	\$25,076
2007	\$139,015	\$297,581	\$6,976	\$6,255	\$10,828

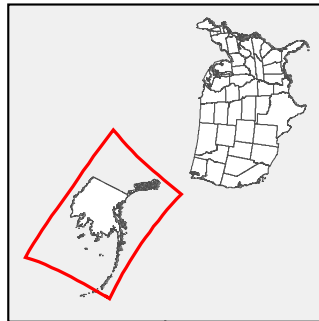
National Office: Fire and Aviation Management Organization

Year	Number of Preparedness and Fuels Positions	Engines	IHCs	Smokejumpers	Aircraft Fixed Wing	Aircraft Rotor Wing
2014	179	0	0	0	4	0
2013	185	0	0	0	5	0
2012	183	0	0	0	5	0
2011	204	0	0	0	5	0
2010	227	0	0	0	6	0
2009	234	0	0	0	3	0
2008	242	0	0	0	3	0
2007	258	0	0	0	3	0

Approximate Budget or Expense in Thousands - National Office

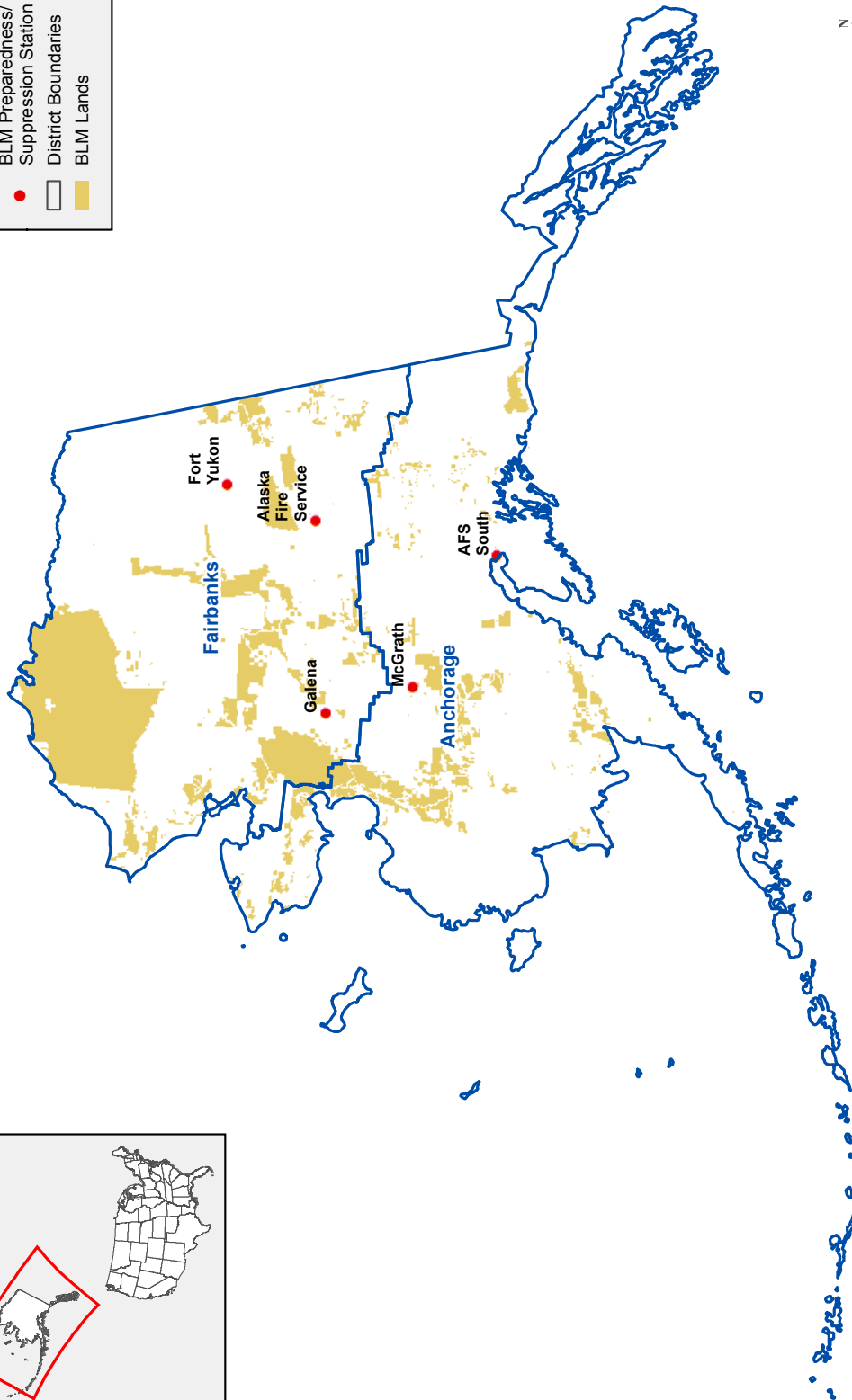
Year	LF100 Preparedness Base Allocation	LF200 Suppression & ES Expenditures	LF210 Severity Expenditures	L5320 Fire Trespass Allocation	LF571/LF561 State Assistance Allocation
2014	\$39,513	N/A	N/A	\$0	\$3,406
2013	\$39,513	\$25,685	\$658	\$0	\$3,043
2012	\$37,456	\$55,947	\$910	\$0	\$2,548
2011	\$37,023	\$12,652	\$2,086	\$0	\$4,421
2010	\$39,014	\$7,345	\$2,900	\$0	\$4,193
2009	\$38,141	\$5,755	\$931	\$0	\$11,999
2008	\$37,665	\$1,649	\$2,015	\$0	\$14,975
2007	\$34,614	\$21,957	\$714	\$0	\$3,879

Alaska



Legend

- BLM Preparedness/Suppression Station
- District Boundaries
- BLM Lands



No warranty is made by the Bureau of Land Management. The accuracy, reliability, or completeness of these data for individual use or aggregate use with other data is not guaranteed. The following (map) cannot be made Section 508 compliant.

The sources of the data are from Idaho-BLM Corporate Data, and the USGS. 4/15/2013

Alaska



State Director: Bud Cribley, 907-271-5080; State FMO: Kent Slaughter 907-356-5505

Emphasis Areas

- Provide for the safety of firefighters and the public in all BLM fire and aviation operations in Alaska.
- Work with DOI partners to ensure that BLM Alaska Fire Service is providing effective suppression operations on agency lands while supporting their fire management activities consistent with their resource plans and the Alaska Interagency Wildland Fire Management Plan.
- Work with Alaska Native tribes and corporations to increase development and employment opportunities for emergency firefighters from 26 villages within the AFS protection area.
- Continue to proactively coordinate with the Alaska Division of Forestry and other Alaska Wildland Fire Coordinating Group members to effectively staff and manage the Alaska Interagency Incident Management Teams.
- Oversee and implement fuels management projects on approximately 1.7 million acres of public lands that have been withdrawn for military purposes and provide fire suppression services on those lands to enhance military training opportunities.

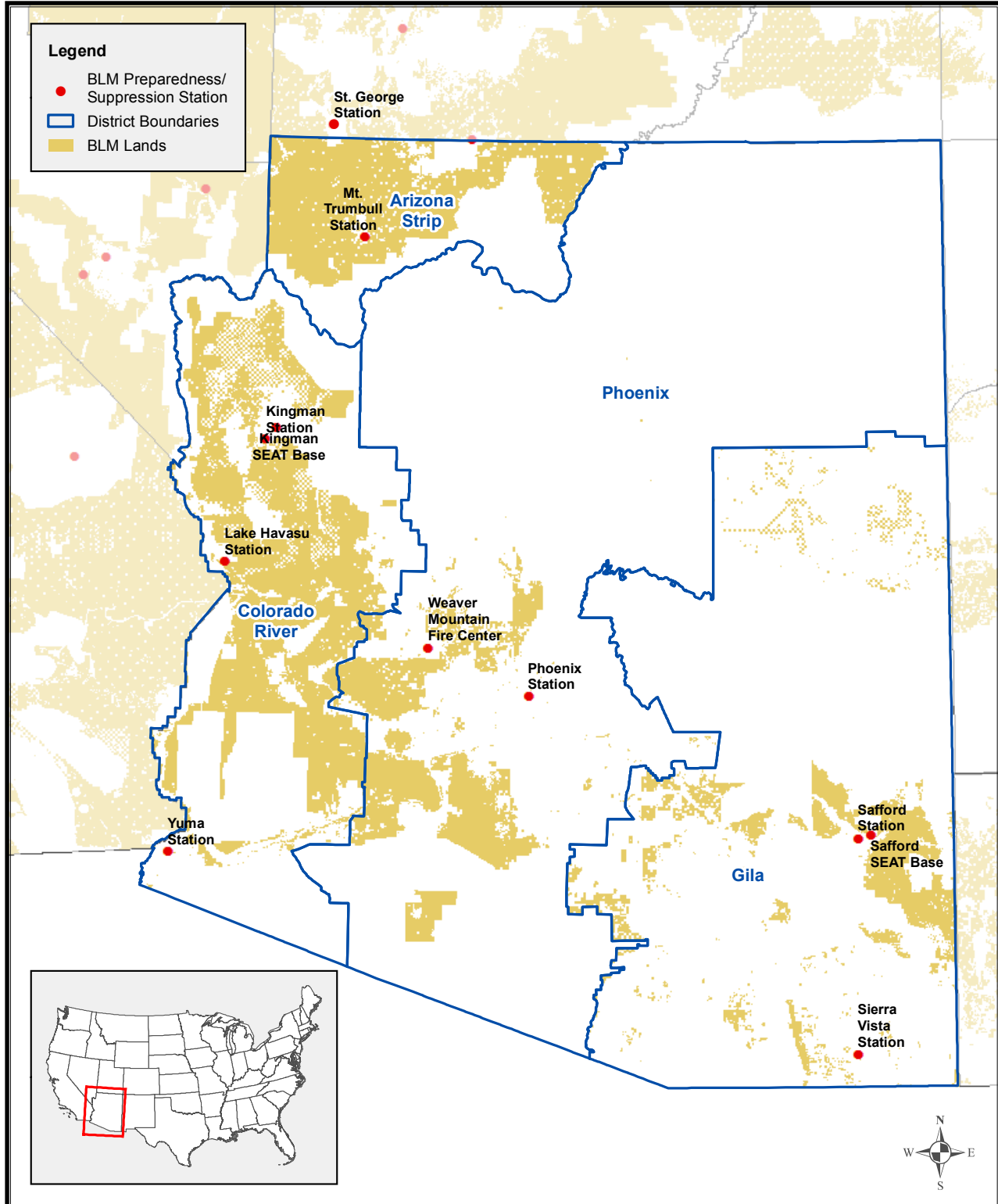
Fire and Aviation Management Organization

Year	Number of Preparedness and Fuels Positions	Engines	IHCs	Smokeyjumpers	Aircraft Fixed Wing	Aircraft Rotor Wing
2014	328	0	2	68	12	6
2013	328	0	2	68	12	6
2012	323	0	2	66	12	6
2011	323	0	2	66	12	5
2010	299	0	2	70	12	6
2009	307	0	2	74	9	6
2008	332	0	2	76	9	6
2007	304	0	3	65	9	6

Approximate Budget or Expense in Thousands

Year	LF100 Preparedness Base Allocation	LF200 Suppression & ES Expenditures	LF210 Severity Expenditures	L5320 Fire Trespass Allocation	LF571/LF561 State Assistance Allocation
2014	\$17,464	N/A	N/A	\$83	\$6,934
2013	\$17,464	\$32,192	\$1,014	\$166	\$5,639
2012	\$17,307	\$19,181	\$570	\$233	\$3,989
2011	\$17,514	\$18,936	\$94	\$163	\$4,217
2010	\$18,215	\$43,799	\$0	\$172	\$2,435
2009	\$17,646	\$28,691	\$3	\$0	\$1,873
2008	\$17,216	\$19,577	\$49	\$519	\$3,346
2007	\$17,245	\$27,435	\$89	\$599	\$2,459

Arizona



The sources of the data are from Idaho-BLM Corporate Data, and the USGS. 4/15/2013

No warranty is made by the Bureau of Land Management. The accuracy, reliability, or completeness of these data for individual use or aggregate use with other data is not guaranteed. The following (map) cannot be made Section 508 compliant.

Arizona



State Director: Raymond Suazo, 602-417-9200; State FMO: Kelly Castillo 602-4179550

Emphasis Areas

- Safety of firefighters and the public is always the top priority.
- Continued emphases on promoting interagency relationships and partnerships to realize cost saving efficiencies.
- Proactively working with and recruiting from local high schools and community colleges by providing fire science education and employment to urban-based youth, increasing diversity within the BLM wildland fire program. Arizona has also been a leader in developing employment opportunities in veteran hiring.
- Ensure that hazardous fuels projects are conducted in the highest risk and highest priority areas. Implement treatments across a wide array of vegetation types including the Sonoran, Mojave and Chihuahuan deserts and in chaparral and Ponderosa pine. Treatments often have multiple benefits to resources within various programs and close coordination with resource staffs has become a high priority. The utilization of the Hazardous Fuels Reduction Grant with Arizona State Forestry Department has proven to be an excellent tool in achieving treatments adjacent to high-risk communities.
- The international border with Mexico is a major emphasis due to numerous issues. More than 70 percent of wildfire occurrences are human-caused due to the high frequency of human activity, including trafficking associated with undocumented aliens. Currently, the Arizona fire program is working with its partners to promote the safety of responders to the area and on prevention methods to curb this increasing problem. In addition to this ongoing vigilance, BLM Arizona continues to foster a partnership with Mexico through the International Border Fire Response Agreement.

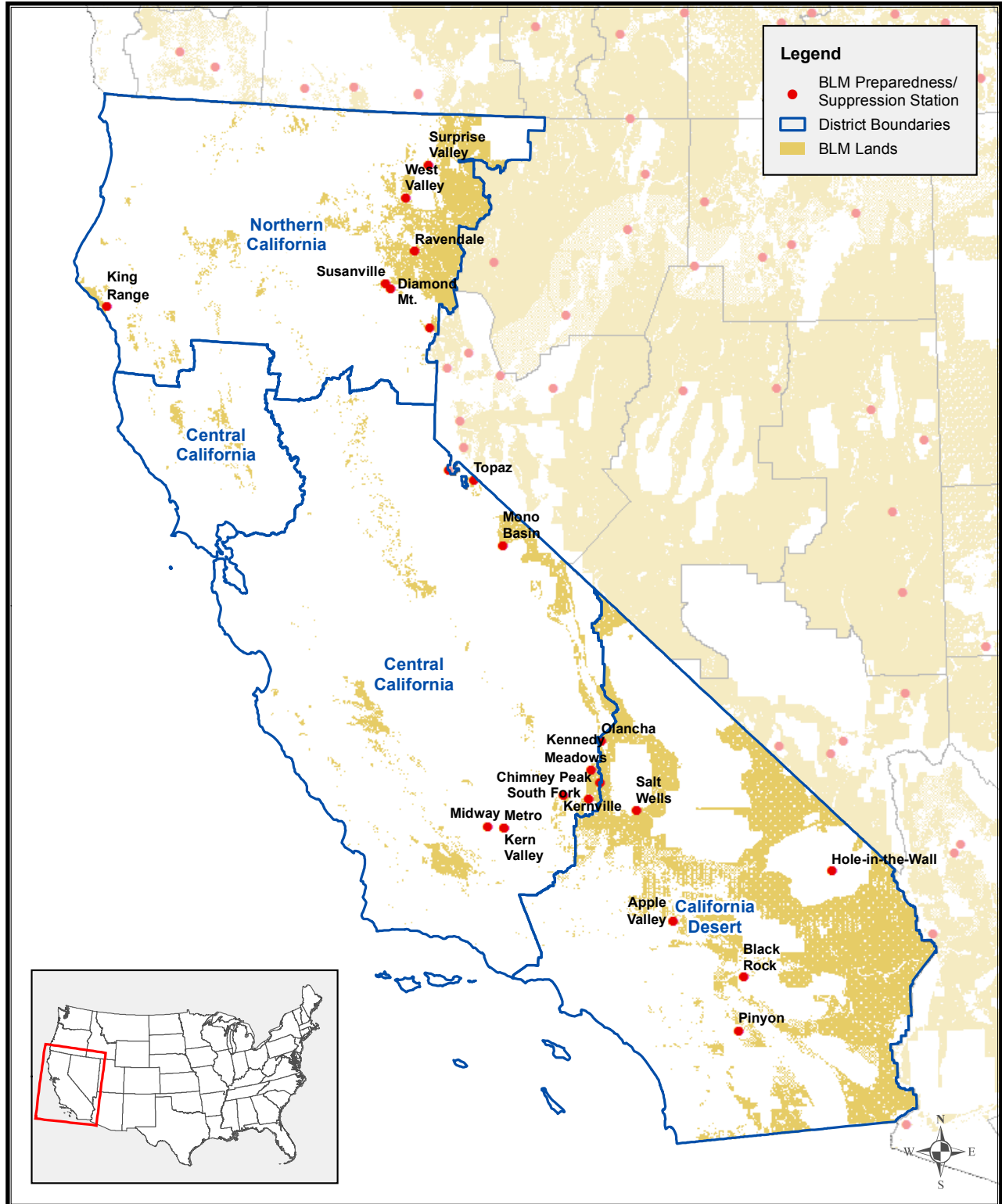
Fire and Aviation Management Organization

Year	Number of Preparedness and Fuels Positions	Engines	IHCs	Smokejumpers	Aircraft Fixed Wing	Aircraft Rotor Wing
2014	131	12	0	0	1	2
2013	131	12	0	0	1	2
2012	131	12	0	0	1	2
2011	131	12	0	0	2	2
2010	135	14	0	0	2	2
2009	149	16	0	0	0	2
2008	161	13	0	0	0	2
2007	161	13	0	0	1	2

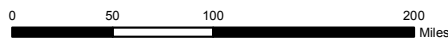
Approximate Budget or Expense in Thousands

Year	LF100 Preparedness Base Allocation	LF200 Suppression & ES Expenditures	LF210 Severity Expenditures	L5320 Fire Trespass Allocation	LF571/LF561 State Assistance Allocation
2014	\$4,649	N/A	N/A	\$190	\$304
2013	\$4,649	\$7,335	\$308	\$2,366	\$209
2012	\$4,581	\$6,885	\$421	\$2,311	\$328
2011	\$4,634	\$8,957	\$697	\$157	\$182
2010	\$4,800	\$4,732	\$313	\$165	\$348
2009	\$4,614	\$5,424	\$310	\$39	\$555
2008	\$4,496	\$7,326	\$790	\$66	\$677
2007	\$4,485	\$13,330	\$522	\$77	\$242

California



The sources of the data are from Idaho-BLM Corporate Data, and the USGS. 4/15/2013



No warranty is made by the Bureau of Land Management. The accuracy, reliability, or completeness of these data for individual use or aggregate use with other data is not guaranteed. The following (map) cannot be made Section 508 compliant.

California



State Director: Jim Kenna, 916-978-4600; State FMO: Paul Bannister, 916-978-4433

Emphasis Areas

- Maintain our overarching goal of providing firefighter and public safety.
- Given the population density, terrain and fuels, wildland-urban interface areas continue to be a high-priority emphasis for the California fire program. These efforts are accomplished through prevention, education, fuels treatments and fire protection. This includes:
 - A continued emphasis on interagency collaboration to accomplish a unified approach in all fire management activities.
 - Maintaining interagency cooperation and coordination throughout all emergency response activities.
 - Provide habitat protection and preservation for sage grouse through fuels treatment and aggressive initial attack.
 - Support the recruitment and development of veterans through the Folsom Lake Type 2 fire crew.
 - Reliable and professional customer service.

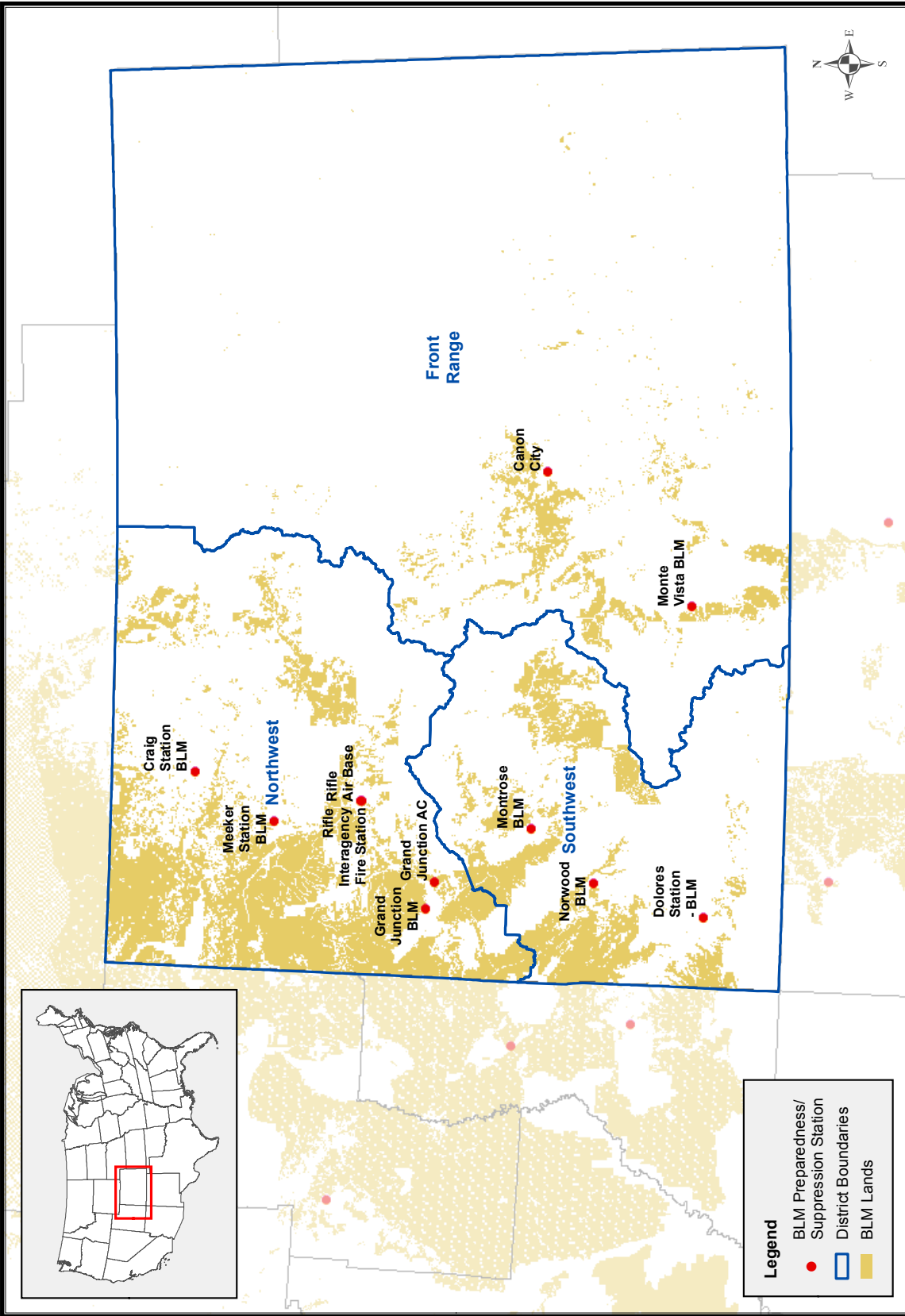
Fire and Aviation Management Organization

Year	Number of Preparedness and Fuels Positions	Engines	IHCs	Smokejumpers	Aircraft Fixed Wing	Aircraft Rotor Wing
2014	303	28	2	0	0	2
2013	303	28	2	0	0	2
2012	323	28	2	0	0	2
2011	316	26	2	0	0	2
2010	302	26	2	0	0	2
2009	304	28	2	0	0	2
2008	304	28	2	0	0	2
2007	326	26	2	0	0	2

Approximate Budget or Expense in Thousands

Year	LF100 Preparedness Base Allocation	LF200 Suppression & ES Expenditures	LF210 Severity Expenditures	L5320 Fire Trespass Allocation	LF571/LF561 State Assistance Allocation
2014	\$11,343	N/A	N/A	\$401	\$973
2013	\$11,343	\$29,663	\$1,413	\$432	\$723
2012	\$11,200	\$22,194	\$338	\$439	\$558
2011	\$11,511	\$11,527	\$265	\$408	\$387
2010	\$12,095	\$12,424	\$643	\$278	\$233
2009	\$11,741	\$11,640	\$391	\$0	\$191
2008	\$11,430	\$21,715	\$662	\$78	\$253
2007	\$11,322	\$18,001	\$957	\$6	\$319

Colorado



Colorado



State Director: Ruth Welch (acting), 303-239-3700; State FMO: Todd Richardson, 303-239-3879

Emphasis Areas

- Maintain a safe and effective fire management organization; particularly within the confines of austere funding.
- Continue pursuing Service First opportunities to achieve efficiencies where possible.
- Protect priority sage-grouse habitat from unwanted wildland fire.
- Utilize wildland fire to meet resource objectives stated within Resource Management Plans.
- Continue integrating High Reliability Organization (HRO) principles into fire management daily operations.
- Implement health and safety standards for fire response in oil and gas development areas.
- Build a balanced fuels management program so to ensure fiscal efficiencies, internal and external collaborative planning and implementation, and effectiveness in the prevention of catastrophic fire effects.

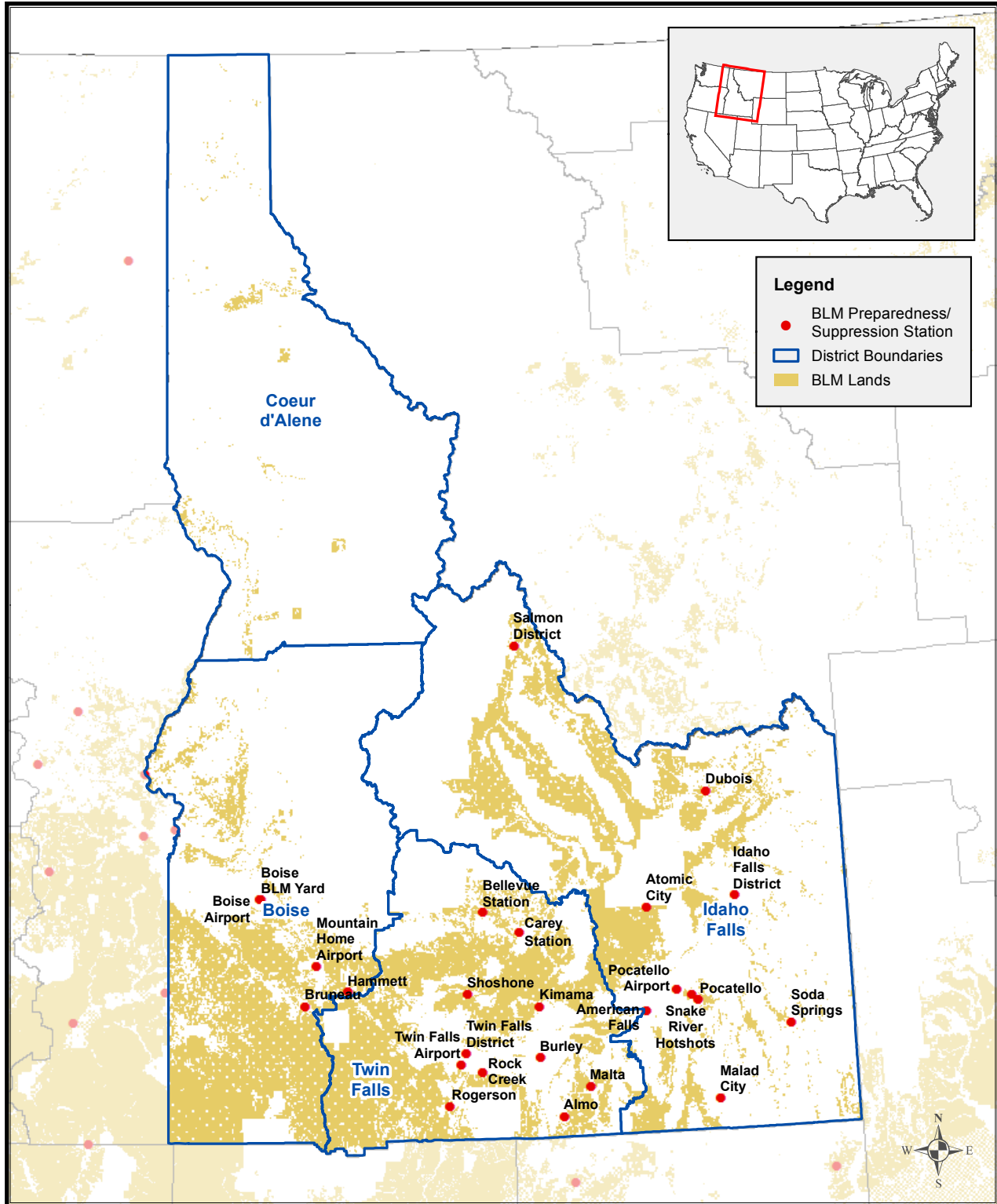
Fire and Aviation Management Organization

Year	Number of Preparedness and Fuels Positions	Engines	IHCs	Smokejumpers	Aircraft Fixed Wing	Aircraft Rotor Wing
2014	174	16	1	0	2	1
2013	174	16	1	0	2	1
2012	180	15	1	0	2	1
2011	186	18	1	0	1	1
2010	224	18	1	0	1	1
2009	167	19	1	0	0	1
2008	156	17	1	0	0	1
2007	157	17	1	0	1	1

Approximate Budget or Expense in Thousands

Year	LF100 Preparedness Base Allocation	LF200 Suppression & ES Expenditures	LF210 Severity Expenditures	L5320 Fire Trespass Allocation	LF571/LF561 State Assistance Allocation
2014	\$6,293	N/A	N/A	\$262	\$571
2013	\$6,293	\$13,609	\$273	\$943	\$352
2012	\$6,206	\$15,948	\$634	\$937	\$251
2011	\$6,268	\$9,446	\$292	\$119	\$97
2010	\$6,470	\$5,994	\$125	\$125	\$345
2009	\$6,239	\$6,000	\$81	\$1	\$1,216
2008	\$6,070	\$6,885	\$77	\$143	\$505
2007	\$5,991	\$6,937	\$116	\$193	\$446

Idaho



The sources of the data are from Idaho-BLM Corporate Data, and the USGS. 4/15/2013

0 25 50 100 Miles

No warranty is made by the Bureau of Land Management. The accuracy, reliability, or completeness of these data for individual use or aggregate use with other data is not guaranteed. The following (map) cannot be made Section 508 compliant.

Idaho



State Director: Tim Murphy (acting) 208-373-4001; State FMO: Michael Morcom 208-373-3851

Emphasis Areas

- Provide leadership and support for the public, our partners and the Bureau by professionally integrating wildland fire, safety and resource management programs.
- Continue working with Idaho Department of Lands regarding training and agreements with the Rangeland Fire Protection Associations located in Idaho.
- Partnering with Federal and State agencies to develop and implement social media tools targeting fire prevention, public use restrictions, closures and general fire information.
- Develop and distribute statewide public service announcements to try and reduce the number of human caused fires in Idaho for 2014.
- Enhance the capabilities of the District Incident Business Specialists in regards to audits and reviews based on the 2013 OIG audits.
- Continue to work with internal and external partners to protect and improve the sage steppe vegetation communities and reduce the disturbance cycle.
- Great Basin Training Unit will continue to deliver high quality fire training to the geographic area and further implement a priority trainee program for fire incident management succession planning.
- Utilize and position aviation assets in a proactive manner to provide for aggressive initial attack.

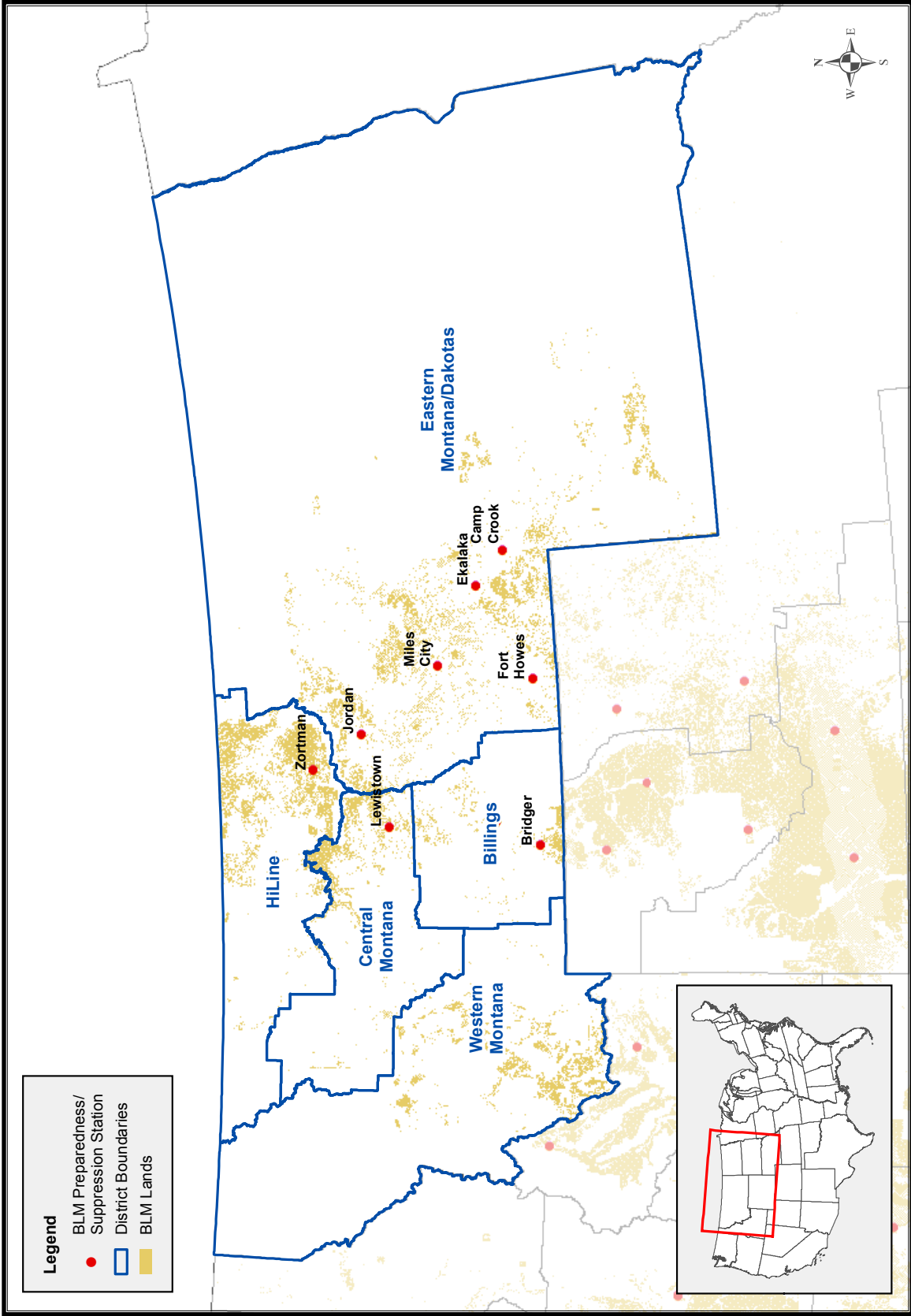
Fire and Aviation Management Organization

Year	Number of Preparedness and Fuels Positions	Engines	IHCs	Smokejumpers	Aircraft Fixed Wing	Aircraft Rotor Wing
2014	469	49	1	0	4	2
2013	469	49	1	0	4	2
2012	501	56	1	0	4	2
2011	508	51	1	0	5	2
2010	494	53	1	0	5	2
2009	505	54	1	0	2	2
2008	470	49	1	0	2	2
2007	482	58	1	0	5	2

Approximate Budget or Expense in Thousands

Year	LF100 Preparedness Base Allocation	LF200 Suppression & ES Expenditures	LF210 Severity Expenditures	L5320 Fire Trespass Allocation	LF571/LF561 State Assistance Allocation
2014	\$12,714	N/A	N/A	\$966	\$743
2013	\$12,714	\$31,765	\$1,811	\$1,604	\$671
2012	\$12,532	\$27,506	\$1,063	\$1,750	\$655
2011	\$12,640	\$34,910	\$617	\$1,236	\$532
2010	\$12,605	\$21,919	\$207	\$1,377	\$411
2009	\$12,192	\$11,045	\$45	\$1,011	\$204
2008	\$11,905	\$20,479	\$725	\$564	\$277
2007	\$11,942	\$41,458	\$716	\$724	\$173

Montana / Dakotas



No warranty is made by the Bureau of Land Management. The accuracy, reliability, or completeness of these data for individual use or aggregate use with other data is not guaranteed. The following (map) cannot be made Section 508 compliant.

The sources of the data are from Idaho-BLM Corporate Data, and the USGS. 4/15/2013

Montana / Dakotas



State Director: Jamie Connell, 406-896-5012; State FMO: Ken Schmid, 406-896-2919

Emphasis Areas

- The Montana / Dakotas BLM fire program will promote a highly reliable and safety oriented culture in order to further the agency mission and serve the public interest through the application of sound fire management practices, personal and professional accountability, and mutual support.
- Workforce planning is a concern; we want our programs to be sustainable and resilient, and realize that our employees are our most valuable resource.
- Continued cooperation with interagency partners is critical to our success.
- Hazardous Fuels Reduction and Community Assistance will work toward achieving the goals of the Cohesive Strategy. An emphasis will be to communicate and showcase the effectiveness of these important efforts.
- We will help our Community Assistance Veterans crewmembers find future and permanent employment through training and outreach.
- We will strive to protect and enhance sage grouse and other T & E species through protection of sagebrush and other critical habitat.

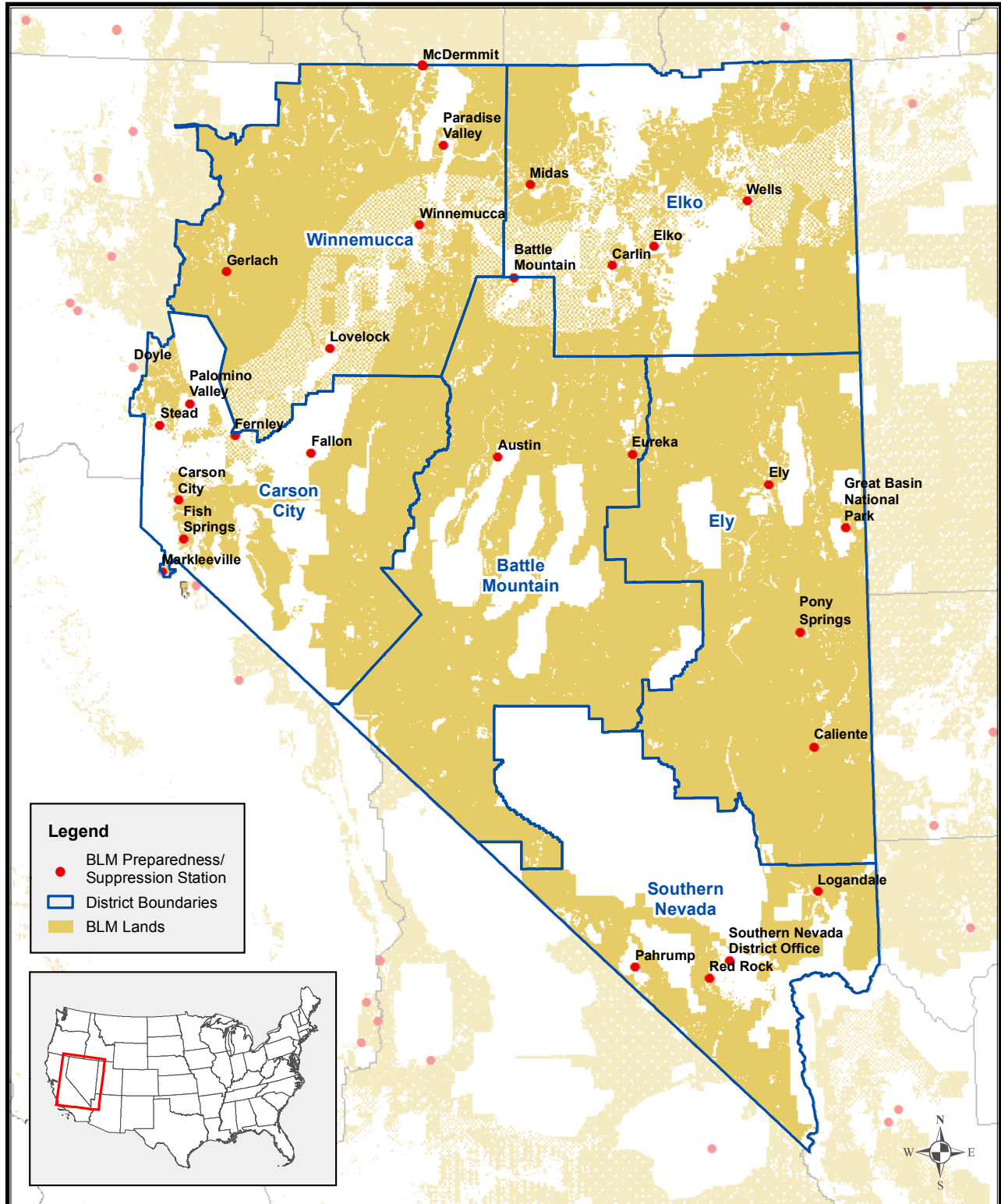
Fire and Aviation Management Organization

Year	Number of Preparedness and Fuels Positions	Engines	IHCs	Smokejumpers	Aircraft Fixed Wing	Aircraft Rotor Wing
2014	208	18	0	0	3	2
2013	208	18	0	0	3	2
2012	209	18	0	0	3	2
2011	257	18	0	0	4	2
2010	279	18	0	0	4	2
2009	280	18	0	0	1	2
2008	267	18	0	0	1	2
2007	218	18	0	0	4	2

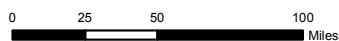
Approximate Budget or Expense in Thousands

Year	LF100 Preparedness Base Allocation	LF200 Suppression & ES Expenditures	LF210 Severity Expenditures	LF210 Severity Expenditures	LF210 Severity Expenditures
2014	\$6,825	N/A	N/A	\$89	\$981
2013	\$6,825	\$7,222	\$367	\$446	\$1,310
2012	\$6,775	\$15,350	\$914	\$503	\$1,821
2011	\$6,927	\$7,354	\$101	\$121	\$1,701
2010	\$7,278	\$3,440	\$37	\$186	\$1,849
2009	\$6,907	\$2,915	\$180	\$406	\$2,665
2008	\$6,727	\$5,815	\$159	\$643	\$1,752
2007	\$6,673	\$10,950	\$791	\$1,217	\$1,023

Nevada



The sources of the data are from Idaho-BLM Corporate Data, and the USGS. 4/15/2013



No warranty is made by the Bureau of Land Management. The accuracy, reliability, or completeness of these data for individual use or aggregate use with other data is not guaranteed. The following (map) cannot be made Section 508 compliant.

Nevada



State Director: Amy Lueders, 775-861-6590; State FMO: Rex McKnight, 775-861-6670

Emphasis Areas

- Safety of firefighters and the public.
- Aggressive initial attack on all incidents in the Wildland Urban Interface (WUI) and in sage grouse habitat.
- Develop WUI projects in the sage/mountain brush plant communities as well as in cheatgrass areas. The large portion of this type of treatment is mechanical application.
- Cost savings by the combined Fire Management Zone with Battle Mountain and Winnemucca districts realizing cost-savings in Fire Management oversight and continued development of the Mesquite tri-regional SEAT base (Arizona, Utah and Nevada)
- Training and recruitment of Veterans by using the Vegas Valley Veteran Handcrew a Type 2 Initial Attack Crews.

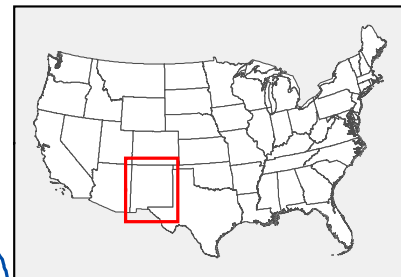
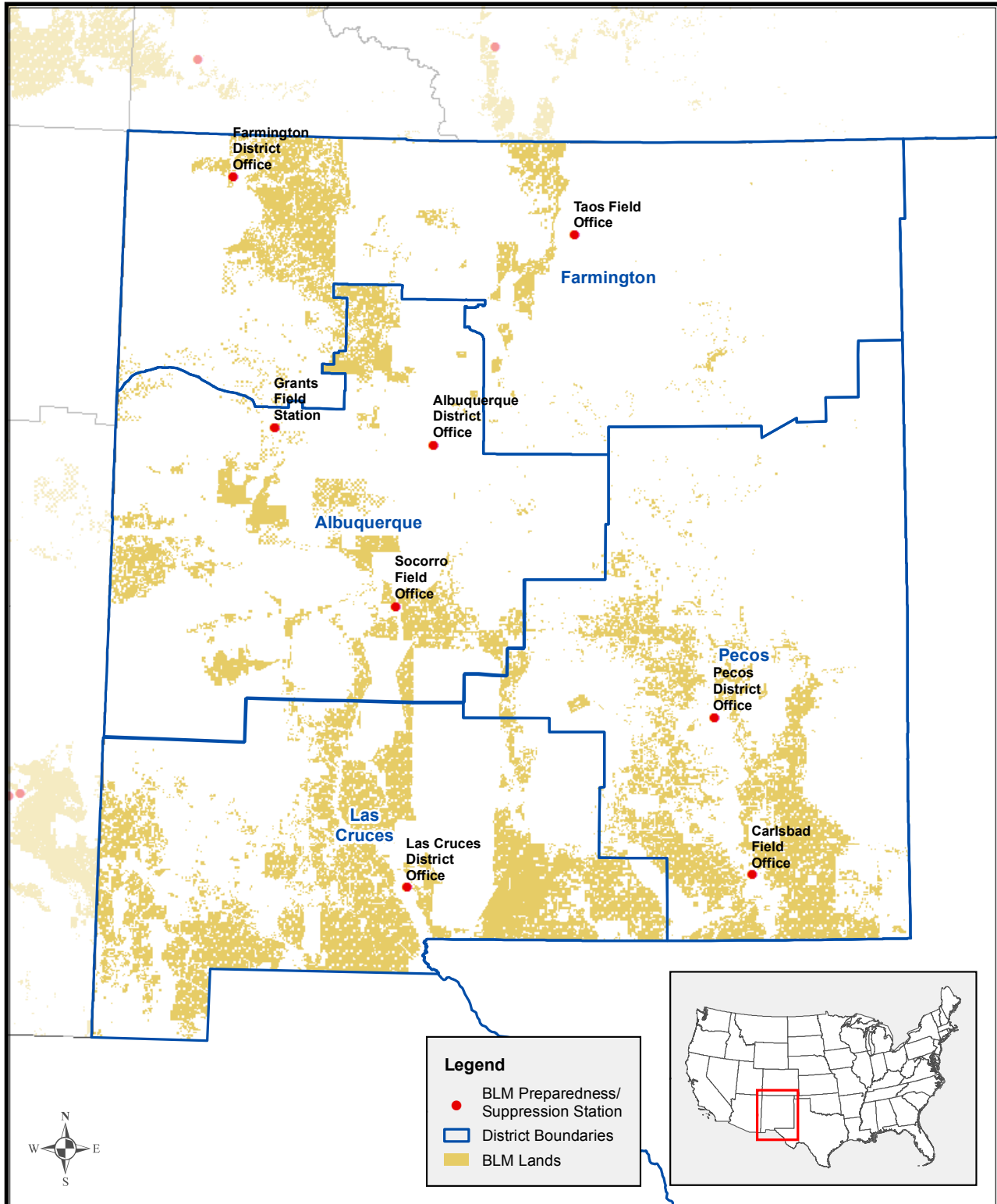
Fire and Aviation Management Organization

Year	Number of Preparedness and Fuels Positions	Engines	IHCs	Smokejumpers	Aircraft Fixed Wing	Aircraft Rotor Wing
2014	378	50	2	0	4	3
2013	378	50	2	0	4	3
2012	398	49	2	0	4	3
2011	352	47	2	0	5	3
2010	357	47	2	0	5	3
2009	357	47	2	0	2	3
2008	332	45	2	0	2	3
2007	336	46	2	0	6	3

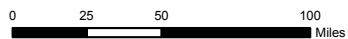
Approximate Budget or Expense in Thousands

Year	LF100 Preparedness Base Allocation	LF200 Suppression & ES Expenditures	LF210 Severity Expenditures	L5320 Fire Trespass Allocation	LF571/LF561 State Assistance Allocation
2014	\$14,274	N/A	N/A	\$207	\$1,590
2013	\$14,274	\$37,941	\$1,250	\$2,600	\$861
2012	\$14,130	\$49,939	\$1,249	\$5,916	\$965
2011	\$14,268	\$22,018	\$865	\$254	\$575
2010	\$14,717	\$16,293	\$617	\$204	\$956
2009	\$14,213	\$16,874	\$476	\$206	\$597
2008	\$13,883	\$26,867	\$804	\$45	\$1,219
2007	\$13,879	\$57,660	\$1,059	\$52	\$475

New Mexico



The sources of the data are from Idaho-BLM Corporate Data, and the USGS.
4/15/2013



No warranty is made by the Bureau of Land Management. The accuracy, reliability, or completeness of these data for individual use or aggregate use with other data is not guaranteed. The following (map) cannot be made Section 508 compliant.

New Mexico - Oklahoma - Texas - Kansas



State Director: Jesse Juen, 505-954-2222; State FMO: Hector Madrid, 505-954-2186

Emphasis Areas

- Instill a fire management culture that leads by example. This includes being an active participant in fire/fuels activities; participating on IMTs and/or supporting local incidents; participating in physical fitness; and ensuring front-line leaders are developing and training the future workforce.
- Foster corporate thinking on gaining efficiencies in both wildfire/fuels programs to include sharing of resources within state and from other states when the need arises.
- Utilize the NM BLM FA Long-Term Budget Plan that outlines a reduction/combining of positions, sharing positions with other states, and/or supplementing temporary firefighter workforce if short-term budget increases should occur.
- Continue to plan and implement landscape-scale treatments that look across boundaries to treat watersheds in a variety of methods to include mechanical, chemical, biological, and prescribed fire. These projects will be done in collaboration with MLR and other partners.
- Advocate aggressive investigation of all human caused fires and the implementation of the NM-BLM Wildland Fire Trespass and Cost Recovery Plan.
- Promote the use of organized Type 3 incident management organizations on extended attack fires.
- Support aviation operations within the Southwest Geographic Area, to include a full service re-load base in Roswell for SEATs, Large Air Tankers, and the DC-10.

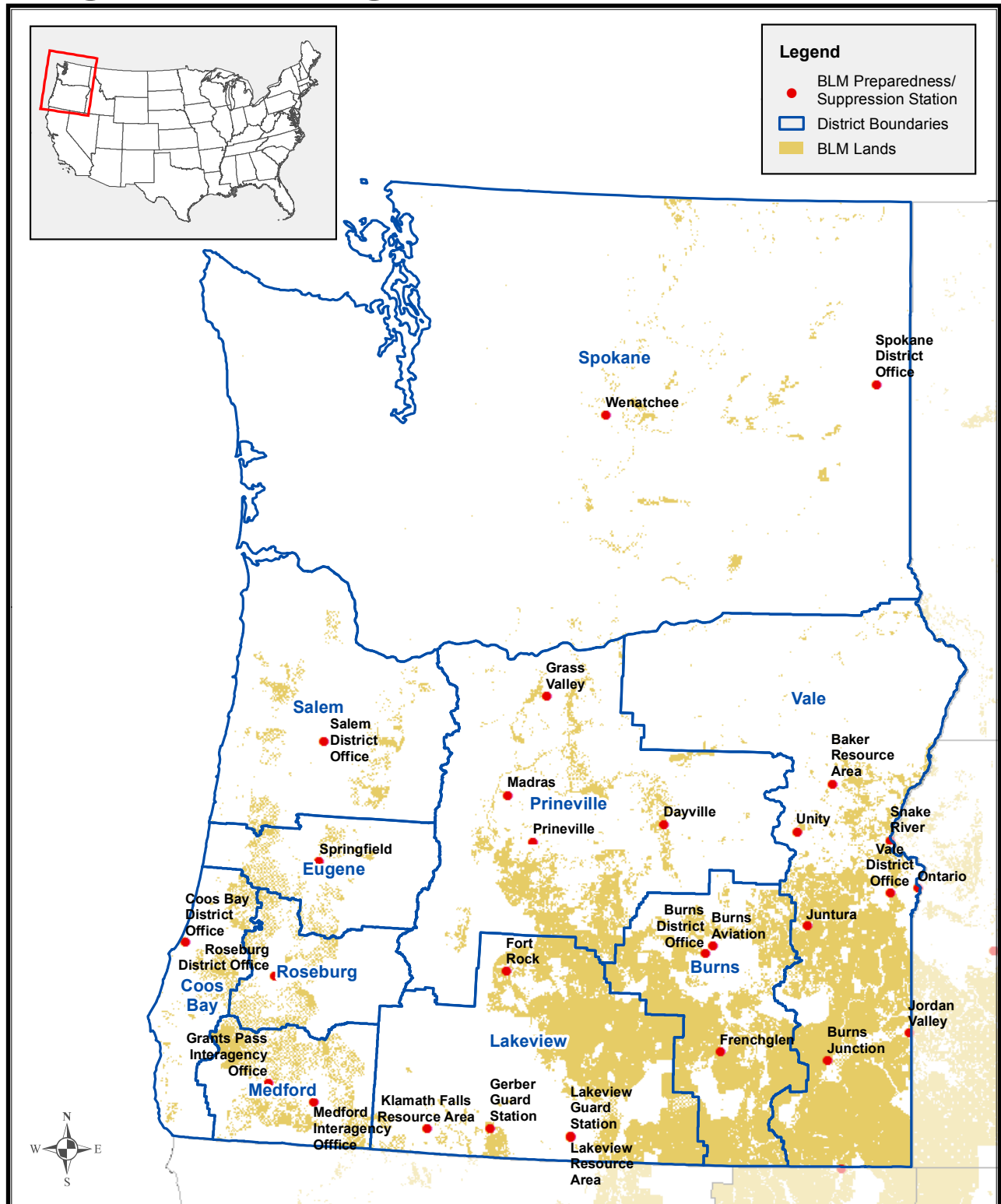
Fire and Aviation Management Organization

Year	Number of Preparedness and Fuels Positions	Engines	IHCs	Smokejumpers	Aircraft Fixed Wing	Aircraft Rotor Wing
2014	97	13	0	0	0	0
2013	97	13	0	0	0	0
2012	111	13	0	0	0	0
2011	111	13	0	0	0	0
2010	129	13	0	0	0	0
2009	121	13	0	0	0	0
2008	129	13	0	0	0	0
2007	139	13	0	0	0	0

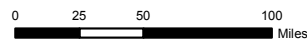
Approximate Budget or Expense in Thousands

Year	LF100 Preparedness Base Allocation	LF200 Suppression & ES Expenditures	LF210 Severity Expenditures	L5320 Fire Trespass Allocation	LF571/LF561 State Assistance Allocation
2014	\$3,393	N/A	N/A	\$96	\$762
2013	\$3,393	\$4,648	\$95	\$325	\$679
2012	\$3,342	\$5,783	\$127	\$359	\$277
2011	\$3,407	\$11,371	\$1,256	\$139	\$244
2010	\$3,570	\$3,013	\$101	\$56	\$154
2009	\$3,399	\$3,329	\$750	\$6	\$326
2008	\$3,311	\$5,359	\$1,177	\$2	\$474
2007	\$3,310	\$3,484	\$242	\$2	\$757

Oregon / Washington



The sources of the data are from Idaho-BLM Corporate Data, and the USGS. 4/15/2013



No warranty is made by the Bureau of Land Management. The accuracy, reliability, or completeness of these data for individual use or aggregate use with other data is not guaranteed. The following (map) cannot be made Section 508 compliant.

Oregon - Washington



State Director: Jerome Perez, 503-808-6026; State FMO: Jeff Fedrizzi, 503-808-6461

Emphasis Areas

- Continue to incorporate the 2013 High Reliability Organizing (HRO) conference in Oregon/Washington state HRO commitments, coupled with continued emphasis on HRO principles to achieve and maintain a safe organization in all fire, fuels and aviation management activities on a daily basis.
- Fire Protection in Western Oregon continues to be performed by Oregon Department of Forestry under the Western Oregon Fire Protection Contract. 2014 is the second year of a 5-year contract and will incorporate lessons learned from the complex 2013 fire season.
- Using the three core principles of the National Wildfire Cohesive Strategy, BLM OR/WA will continue to emphasize integrating with Minerals, Lands and Resources (MLR). An emphasis will be made on integrating hazardous fuels treatments with other MLR projects throughout both states to mitigate the risk of wildfire to communities, support ecosystem restoration for Sage-grouse habitat and produce biomass products for renewable energy and other beneficial uses.
- Finalizing staffing and organization of the State/Regional office (SORO) into a five-section organization led by both the SFMA and the Regional Fire Director; and continue pursuing Service First opportunities to achieve efficiencies wherever possible.
- Partnering with Oregon Division of Forestry to assist private land owners in modifying master agreements from lessons learned from 2012 and 2013; working across borders with Nevada and Idaho on RFPA operations, training and PPE standards.
- Protect priority Sage-grouse habitat from unwanted wildland fire through applying the Principles of Fire Suppression Actions.
- Continue to frame and build an Emergency Medical Response program to ensure we are able to take care of our own.
- Continue to encourage and provide Line Officer wildland fire qualifications and experience. Support and utilize Line Officer mentors; build upon the past success of the 2013 "Line Officer Strike Team" trainer program; and be ready to implement it for the 2014 fire season.

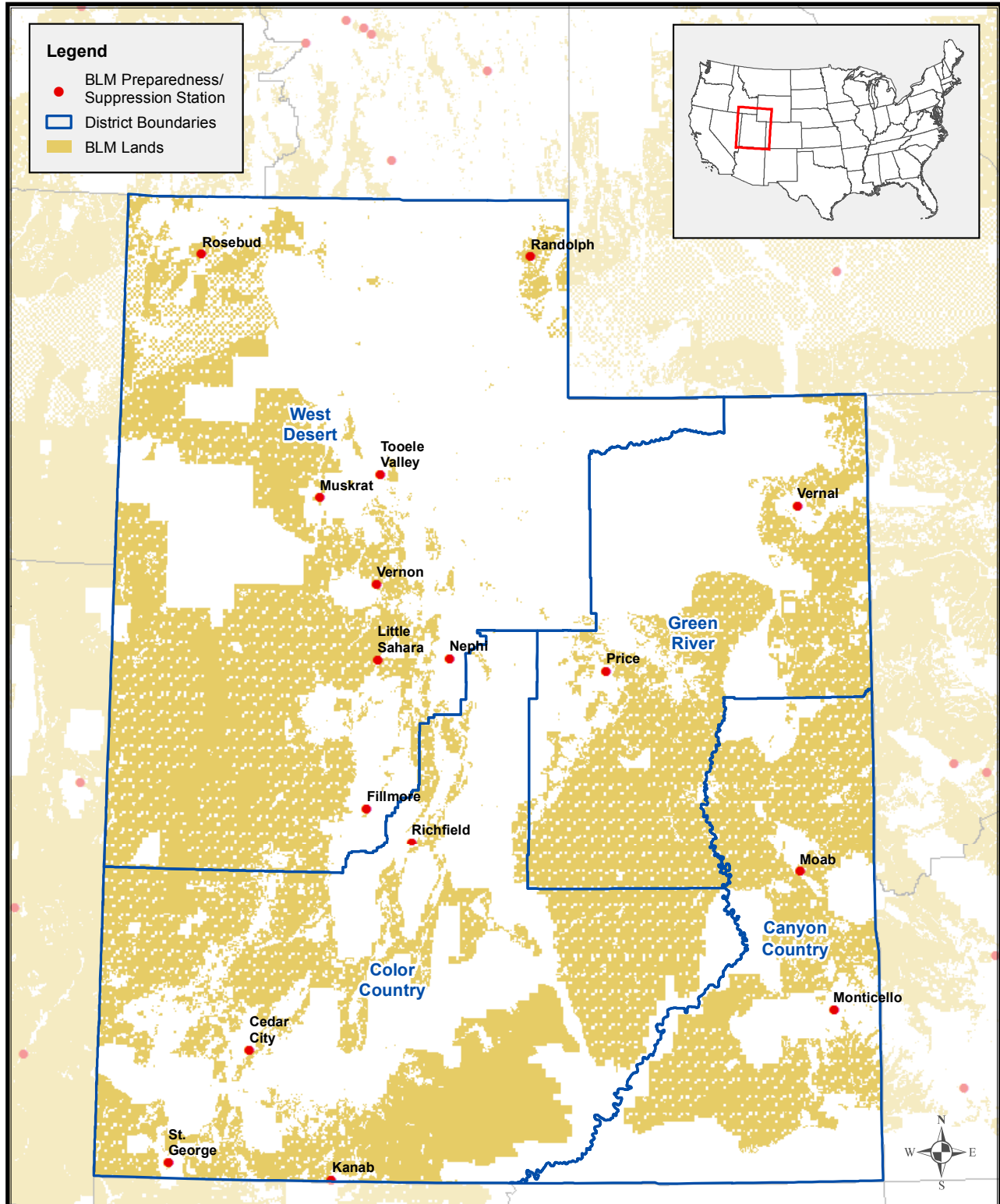
Fire and Aviation Management Organization

Year	Number of Preparedness and Fuels Positions	Engines	IHCs	Smokejumpers	Aircraft Fixed Wing	Aircraft Rotor Wing
2014	427	51	1	0	3	3
2013	427	51	1	0	3	3
2012	430	50	1	0	3	3
2011	417	50	1	0	4	3
2010	431	49	1	0	4	3
2009	406	57	1	0	1	3
2008	440	56	1	0	1	3
2007	438	62	1	0	4	4

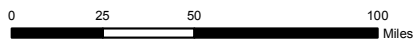
Approximate Budget or Expense in Thousands

Year	LF100 Preparedness Base Allocation	LF200 Suppression & ES Expenditures	LF210 Severity Expenditures	L5320 Fire Trespass Allocation	LF571/LF561 State Assistance Allocation
2014	\$11,933	N/A	N/A	\$541	\$4,957
2013	\$11,933	\$44,574	\$1,765	\$591	\$4,388
2012	\$11,817	\$33,559	\$656	\$837	\$3,966
2011	\$11,956	\$20,853	\$208	\$700	\$4,461
2010	\$12,394	\$17,328	\$377	\$667	\$4,175
2009	\$12,056	\$14,005	\$292	\$108	\$4,105
2008	\$11,759	\$24,290	\$809	\$664	\$198
2007	\$11,709	\$40,619	\$616	\$861	\$130

Utah



The sources of the data are from Idaho-BLM Corporate Data, and the USGS. 4/15/2013



No warranty is made by the Bureau of Land Management. The accuracy, reliability, or completeness of these data for individual use or aggregate use with other data is not guaranteed. The following (map) cannot be made Section 508 compliant.

Utah



State Director: Juan Palma, 801-539-4010; State FMO: Rick Belger, 801-539-4091

Emphasis Areas

- Ensure and maintain firefighter and public safety as the highest priority.
- Provide protection to Sage-grouse and Desert Tortoise habitat through effective fuels treatments and aggressive initial attack.
- Increase coordination with federal and state agencies to optimize the effectiveness of fire trespass cost recovery at all levels -- administrative, criminal and affirmative civil enforcement.
- Continue building upon the collaborative relationship with the Utah Partnership for Conservation and Development (UPCD). Through this partnership, funding can be leveraged and treatment acres maximized through programs and agencies working together.
- Continue providing information to the Fuels Treatment Effectiveness Monitoring system. This demonstrates the return on investment the fuels program is having within Utah.
- Strengthen efforts to implement the principles of a HRO at all levels of the program.
- Use workforce planning to scale the Fire/Aviation/Fuels programs to better align with budget allocations.
- Continue the merger of the Eastern and Western Great Basin Coordination Centers into one Great Basin Coordination Center.
- Implement improvements to statewide fire business practices.

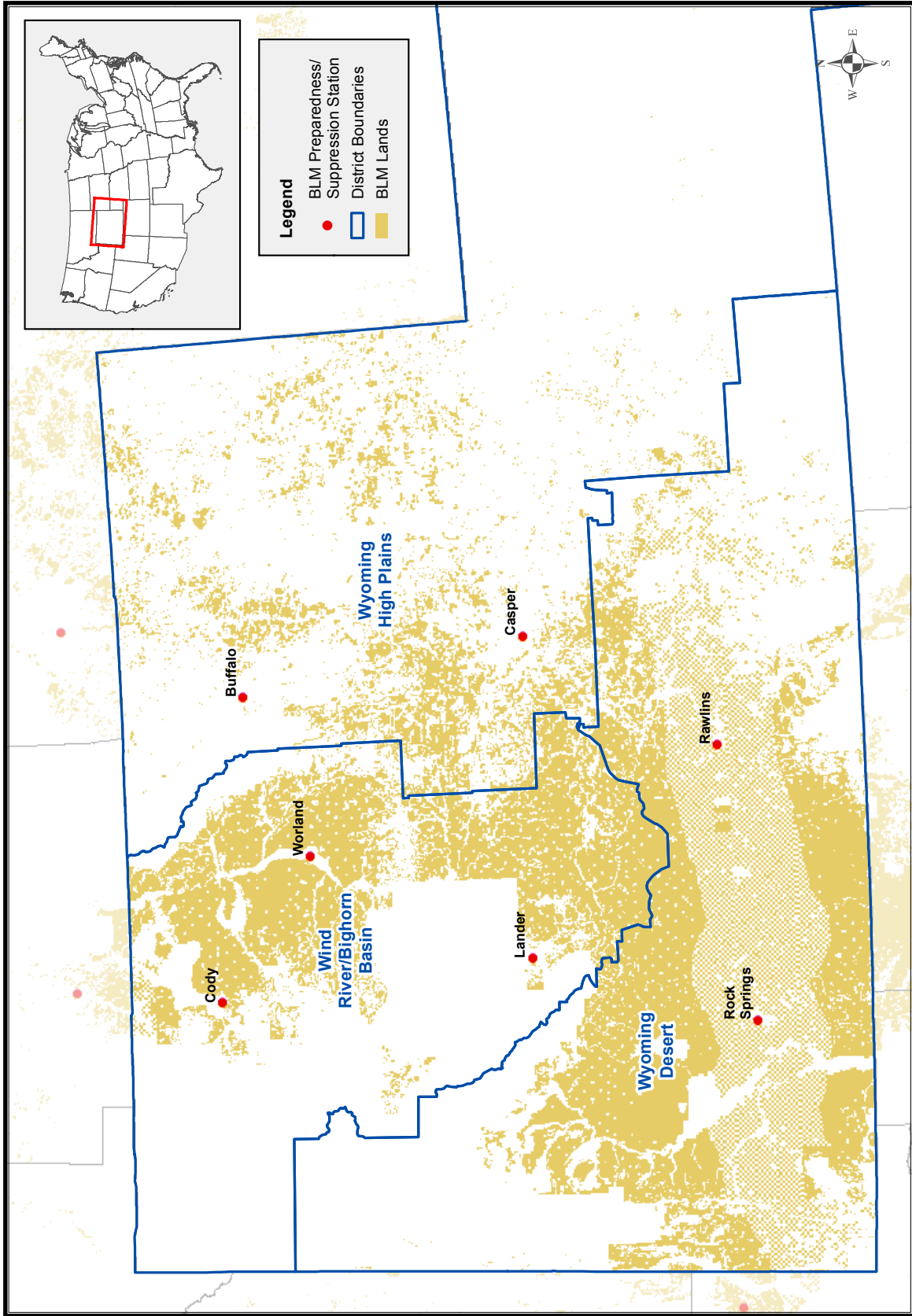
Fire and Aviation Management Organization

Year	Number of Preparedness and Fuels Positions	Engines	IHCs	Smokejumpers	Aircraft Fixed Wing	Aircraft Rotor Wing
2014	275	31	1	0	3	2
2013	275	31	1	0	3	2
2012	283	32	1	0	3	2
2011	282	31	1	0	4	2
2010	287	31	1	0	4	2
2009	299	28	1	0	2	2
2008	309	29	1	0	2	2
2007	297	30	1	0	4	2

Approximate Budget or Expense in Thousands

Year	LF100 Preparedness Base Allocation	LF200 Supression & ES Expenditures	LF210 Severity Expenditures	L5320 Fire Trespass Allocation	LF571/LF561 State Assistance Allocation
2014	\$8,576	N/A	N/A	\$217	\$406
2013	\$8,576	\$16,394	\$780	\$1,234	\$267
2012	\$8,490	\$14,592	\$454	\$2,069	\$558
2011	\$8,533	\$13,497	\$121	\$1,251	\$325
2010	\$8,675	\$11,829	\$168	\$1,367	\$852
2009	\$8,220	\$12,238	\$216	\$72	\$721
2008	\$8,011	\$32,311	\$510	\$3,773	\$523
2007	\$7,984	\$36,313	\$1,130	\$2,474	\$591

Wyoming



No warranty is made by the Bureau of Land Management. The accuracy, reliability, or completeness of these data for individual use or aggregate use with other data is not guaranteed. The following (map) cannot be made Section 508 compliant.

The sources of the data are from Idaho-BLM Corporate Data, and the USGS. 4/15/2013

Wyoming



State Director: Don Simpson, 307-775-6001; State FMO: Kyle Cowan, 307-775-6100

Emphasis Areas

- Wyoming continues to focus on public and firefighter safety as our top priority.
- Key focus area is collaborating with MLR to include planning and implementation of hazardous fuels treatment projects.
- Fire Management maintains responsibility for the Land Mobile Radio program. The BLM Wyoming/Utah Radio Program Manager position is currently vacant.
- Working with the State of Wyoming on WyoLink, which is a VHF- trunking-capable interagency radio system to supplement BLM Wyoming’s conventional MLR system for improved efficiency, safety and effectiveness.
- Wyoming shares three state office-level positions with Utah and Colorado for leveraged capability. BLM Wyoming and BLM Colorado are considering a shared Fire Trespass/Community Assistance position.
- Continue to improve statewide fire business practices.

Fire and Aviation Management Organization

Year	Number of Preparedness and Fuels Positions	Engines	IHCs	Smokejumpers	Aircraft Fixed Wing	Aircraft Rotor Wing
2014	132	16	0	0	0	1
2013	132	16	0	0	0	1
2012	149	16	0	0	0	1
2011	154	16	0	0	0	1
2010	170	16	0	0	0	1
2009	173	16	0	0	0	1
2008	146	16	0	0	0	1
2007	148	16	0	0	0	1

Approximate Budget or Expense in Thousands

Year	LF100 Preparedness Base Allocation	LF200 Suppression & ES Expenditures	LF210 Severity Expenditures	L5320 Fire Trespass Allocation	LF571/LF561 State Assistance Allocation
2014	\$3,811	N/A	N/A	\$322	\$339
2013	\$3,811	\$4,904	\$421	\$405	\$248
2012	\$3,697	\$7,243	\$553	\$91	\$98
2011	\$3,746	\$4,991	\$303	\$49	\$35
2010	\$3,910	\$2,360	\$30	\$50	\$267
2009	\$3,833	\$1,719	\$25	\$0	\$45
2008	\$3,736	\$2,608	\$24	\$50	\$777
2007	\$3,712	\$3,734	\$24	\$50	\$313